

UNDERSTANDING

Source Water Protection

THE GOAL: Prevent contaminants from entering waterways that serve as sources for our drinking water.

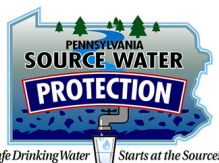
THE BENEFITS:

- ✓ Protects our drinking water supplies.
- ✓ Ensures a healthy habitat for countless species.
- ✓ Decreases need for costly, complex treatments to remove pollutants.

The source water for the Maidencreek Township Authority is from several groundwater wells.

Your water system has volunteered to participate in the Pennsylvania Department of Environmental Protection's Source Water Protection Technical Assistance Program (SWPTAP).

THROUGH SWPTAP: A plan was developed to guide Maidencreek Township Authority's source water protection efforts for now and in the future. More information on this plan will be posted on the Authority's website in the near future.



More Ways to Help



Minimize your use of pesticides and herbicides on your lawn and garden.



Bring hazardous waste (ex: paint) to recycling facilities.



Don't pour motor oil on the ground or in a storm drain. Dispose of motor oil at garages that recycle it.



Pump out your septic system every two or three years.



Do not flush any unwanted or leftover medications down the toilet or sink drain. Dispose of them at a disposal event or collection box.



Don't dump pool water into a creek or storm drain. Direct it to a sanitary sewer or foliage once chlorine diminishes.



Remember that anything you throw or store on the ground or put down the toilet will find its way into waterways.

If you observe a chemical spill, call the PA Department of Environmental Protection at 800-541-2050.

FALL 2025

CITIZEN'S GUIDE:

Tips for Residential Heating Oil Tank Owners



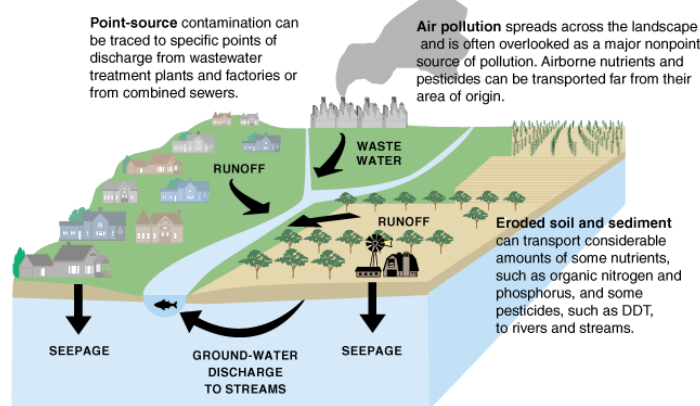
Maidencreek Township Authority

Development of the Authority's Source Water Protection Plan was funded by the PA Department of Environmental Protection's SWPTAP.

DID YOU KNOW:

When oil or other materials get into the environment, plants as well as animals and humans can all be affected.

Leaking tanks can contaminate public water supplies, private wells, and soil. It can also cause fire or explosion hazards. Cleanups for tank owners can be very expensive. Owners of leaking tanks are required to clean up affected soil or water. If you notice a leak, it's in your best interest to clean it up promptly and properly to reduce expensive, liability, and potential contamination.



What is a watershed?

A watershed is all the land that drains to the same river or lake. Water travels from the highest points at the watershed edge to the lowest point at the bottom of the watershed.

How do contaminants get to water?

When it rains, water travels over the land surface. This is called *surface runoff* or *stormwater*. As stormwater flows, it picks up any contaminants lying on the surface.

Some precipitation will percolate into the soil and reach the *groundwater*. The groundwater may also pick up nitrates and chemicals.

Groundwater and stormwater ultimately flow into a river or lake on the watershed.

The impact of contaminants:

Once drinking water is contaminated, it must be treated or abandoned as a drinking water source. This expense can be avoided through source water protection.

Preventing Releases from Residential Tanks

- ☑ Routinely inspect the exterior of an above ground tank and all attached equipment.
- ☑ Install spill and overfill prevention devices.
- ☑ Ensure that the tank address is clear, and the fill line is marked, to help avoid accidental deliveries.
- ☑ Consider a secondary containment structure to prevent spills or leaks from entering the environment.
- ☑ Be sure to take out the fill pipe if removing a tank from inside your home.
- ☑ If you notice drips or leaks, or you are using more oil than normal, call a professional for a detailed inspection of your tank.



ADDITIONAL RESOURCE
Scan with your smartphone camera to access.
PaDEP Residential Home Heating Oil Information

Maidencreek Township Authority

1A Quarry Road, PO Box 289 | Blandon, PA 19510
610-926-4173 | <https://maidencreektwpauthority.org/>

The members of your water system work around the clock to provide top quality tap water to every tap. It is a task that we take very seriously. For more information, contact us.